



47 Grove Avenue Harpenden, AL5 1EY

Immaculately presented semi-detached family home of circa 2,000 sq ft. This fine home benefits from well proportioned accommodation throughout, off-street parking for two cars and private rear garden. Close to outstanding local schools and the amenities of Southdown and within walking distance of Harpenden town centre and beautiful open countryside.

Guide price £1,100,000

47 Grove Avenue

Harpenden, AL5 1EY



- Five double bedrooms
- Two bathrooms
- Open plan kitchen/family/dining room
- Fully refurbished
- Large driveway
- Underfloor heating throughout ground floor
- Superbly presented
- Cloakroom & utility room
- Council Tax Band F

Entrance Hall

Living Room

14'0" x 14'0" (4.29m x 4.27m)

Kitchen/Dining/Family Room

25'3" x 20'0" (7.70m x 6.12m)

Utility Room

Cloakroom

Bedroom One

15'10" x 14'9" (4.83m x 4.50m)

En-suite Shower Room

Bedroom Two

12'4" x 12'4" (3.78m x 3.76m)

Bedroom Three

12'11" x 10'0" (3.94m x 3.05m)

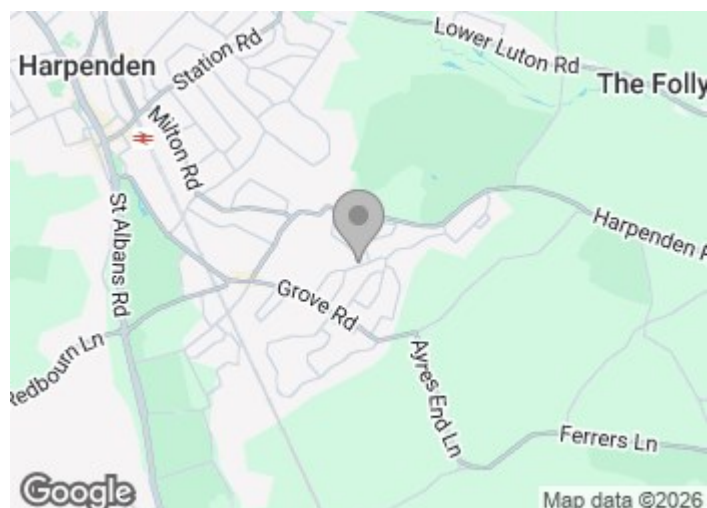
Bedroom Four

12'4" x 9'10" (3.76m x 3.00m)

Bedroom Five

12'11" x 8'2" (3.96m x 2.51m)

Family Bathroom

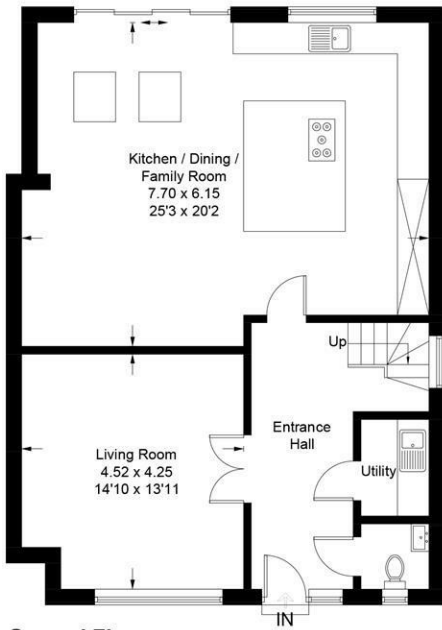


[Directions](#)

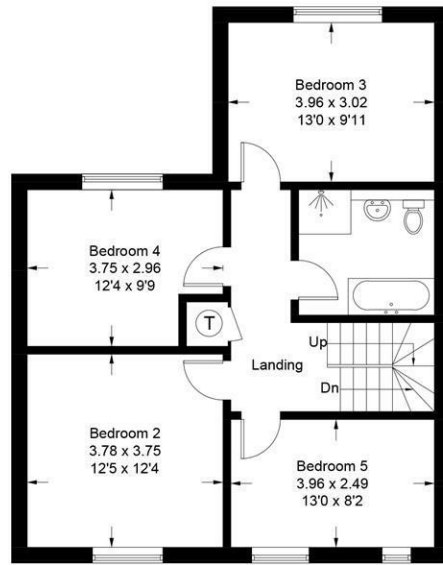


Grove Avenue

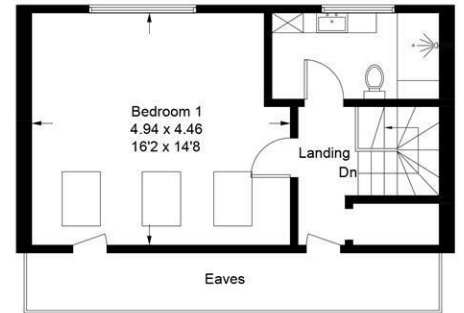
Approximate Gross Internal Area = 181.3 sq m / 1951.1 sq ft



Ground Floor



First Floor



Second Floor

This plan is for layout guidance only. Not drawn to scale unless stated. Windows and door openings are approximate. Whilst every care is taken in the preparation of this plan, please check all dimensions, shapes and compass bearings before making any decisions reliant upon them. (ID1247763)

These particulars, whilst believed to be accurate are set out as a general outline only for guidance and do not constitute any part of an offer or contract. Intending purchasers should not rely on them as statements of representation of fact, but must satisfy themselves by inspection or otherwise as to their accuracy. No person in this firm's employment has the authority to make or give any representation or warranty in respect of the property.

